

HAIRDRESSERS

Fed up with just earning the fitting cost for lace wigs?



BECOME A LACE WIG SUPPLIER AND WATCH YOUR PROFITS INCREASE!



0871 218 0566

www.needamakeover.co.uk



We can supply

- Lace wigs within 7 working days
- No need to keep a huge stock
- Remy & Yaki Human Lace wigs from £120
- High Grade Synthetic lace wigs which can be curled, straightened and blow dried from £45

need a career makeover?



The UK is short of qualified hair extension trainers

train to become a licensed certified hair extensions trainer delivering over 10 techniques

www.needamakeover.co.uk

0871 218 0566

HAIR EXTENSION COURSES IN 16 TECHNIQUES. BECOME A TRAINER, BECOME A CONSULTANT

There's more to adding hair!



0871 218 0566

Acquire the skills by qualifying to become a hair enhancement consultant or trainer and earn over £30K pa
no need to be a qualified hairdresser!



We deliver introductory courses. 1, 2 or 3 day courses 1 week intense residential courses

Course Brochure 2010 www.academy-of-vocational-and-professional-training.org

What will you learn

- 1 Learn to conduct a consultation and measure clients head for correct wig size
- 2 Learn about the different systems in the market
- 3 Learn about the procedure and bonding agents and how to work with them.
- 4 Learn to apply and remove lace wig Learn about the ongoing maintenance
- 5 Work on a live model

Package includes

Theory Module on Wigs, Colour step by step manual. Appraisal form.

Professional Kit which includes case, adhesive, skin protector, cleanser, lace release, front lace wig, brush, comb, clips, consultation forms, care forms.

Full colour portfolio & Certificate

Entry into our online national directory

Referrals and leads when enquiries come in.

Trade account access to trade stock.

Monthly newsletter with updates

Entry level & Course fees

2 Day course £780.00

Suitable for non qualified candidate in hairdressing

- learn to professionally braid/corrown
- Step by Step manual,
- Lace wig,
- Full Kit,
- Pre training on training head,
- Complete application on live model

1 Day course £680.00

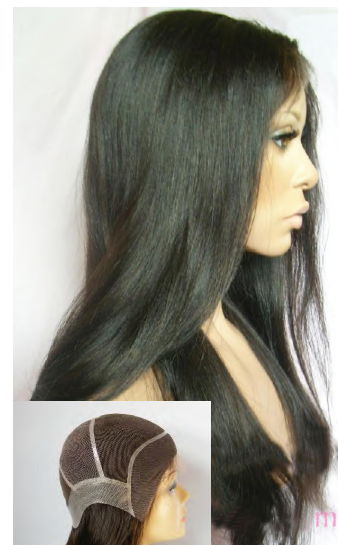
Suitable for candidate who can corrown professionally

- Step by Step manual,
- Lace wig, & Full Kit,
- Pre training on training head,
- Complete application on live model

1 Day course £480.00

Suitable for qualified hairdresser with access to own kit & lace wig.

- Step by Step manual
- Pre training on training head
- Work with live model.



Professional Lace Wig Training Course



The new technique that is sweeping America. Learn to create a natural hair line, look and change the life of clients with thin hair, hair loss, alopecia or problem with difficult to manage hair.



One training opportunity not to be missed.

F.A.Q.



Hair is often bleached knotted and can be parted anywhere when knotted through a full lace wig.



Lace wigs can be made from French lace, Swiss lace, on stretch fibre and even injected into bio skin.



Q1. So what is a Lace front or full lace Wig and who can wear it?

A1. A hairpiece or full wig which is made with a mesh like lace insert in the front or all around (for pony tails) or full system into which individual hairs are hand-tied. This is designed to create a realistic looking hairline. The lace is trimmed to match the skin after purchase so that only a part that looks comfortable and more realistic to the client is left.

When properly worn with special adhesive, the hairline can be so realistic looking as to be virtually undetectable that it is not the wearer's own growing hair. It resembles a lot of the wigs that we see on models as well as famous actresses.

Q2. Do I have to be a qualified hairdresser to train as a Lace wig technician?

A2. No. We train you in all the relevant areas that ensure that you are fully competent to apply and remove the system for your client.

Q3. How long is the training course?

A3. We train you over a one day period. However if you have no braiding experience you will have to book a 1 day course prior to the lace front wig course.

Q4. What should I charge my client?

A4. It will all depend on the type of system they have and length of hair. But consultation, supply and professionally fitting your clients system can start from £220.00 up to £1,000

Q5. How will I order my clients system?

A5. We supply a full back up and support system for our trained consultants. You can open a Trade account and order your system online.

Q6. Can the client wear a lace front wig even if they have lots of hair?

A6. Yes, you have to make your clients hair as flat as possible cornrows/braid it neatly. It is best to have their own parting line showing prior to applying the unit for a more realistic look when they part their hair in their favorite position. You will be trained on how to achieve this.



LACE WIG 1 DAY TRAINING COURSE

Set to over take the weave, undetectable hair line



Step 1

Train to measure clients head, prepare lace wig, test bonds, apply lace wig professionally maintain clients wig



Step 2



Step 3

www.needamakeover.co.uk

to a celebrity look in under 3 hours

Q7. Can the client wear this wig in a pony tail?

A7. Yes, if a full lace wig has been applied correctly.

Q8. Does the lace wig feel heavy?

A8. No, it feels very light and weighs almost nothing unless it's very dense.

Q9. Can the client go for a swim or go to the gym and sweat with this wig on?

A9. Yes, they can do the usual activities with this wig on. Only avoid swimming or getting it wet with sweat for 24 hours after applying adhesives.

Q10. I have black clients who require hair that is more realistic looking

and natural. Can the lace wigs look like their natural relaxed hair?

A10. Yes, the natural look for Afro hair is called Yaki hair which resembles hair that has been relaxed.

Q11. Can they straighten or curl this hair with curling irons etc?

A11. Yes this hair is 100% human hair which reacts in the same way as your own hair.

Q12. Can clients who have experienced hair loss due to illness, wear this wig?

A12. Yes, absolutely, it is just right for clients who suffer from thinning hair or alopecia.

Q13. How long does it take for a client's wig to be custom made and arrive?

A13. In stock wigs can be delivered within 7 working days if UK based but, may take up to 2 weeks for international orders. Custom wigs delivery in 6 weeks but may on some occasions take up to 12 weeks.

Q14. How long will the wig last?

A14. Most wigs can last up to a year or 18 months with proper care. The most durable lace is the French lace which lasts longer than the Swiss lace which is thinner and finer.

How to apply

1. Call us discuss and reserve your training date.
2. Download and complete the application form or we can email you it in word format.
3. Pay Deposit to confirm agreed training date.
4. We can train you at home, in your salon or at our training school
5. We will send you Welcome Pack, Lesson Plan and invoice
6. Visit: www.academy-of-vocational-and-professional-training.org
7. Call 0871 218 0566